



Let **UK** Home

1 Bedrooms

Flat

Located in London

£2,750 Per Month



info@letukhome.co.uk

<https://www.letukhome.co.uk/>

01795 358 886



Belmont Street, Camden London

NW1 8RE



Let UK Home present this spacious one bedroom property in the Sonifer House part of the Verdica situated in the lively and eclectic district of Camden, Greater London.

The flat comprises a spacious open kitchen with a stylishly attached dining area, a magnificent living room leading to a private balcony, one bright bedroom and one modern bathroom. A virtual viewing is provided.

Residents of this exceptional development will benefit from 12-hour concierge service, an unrivalled selection of shops, bars, restaurants, leisure facilities and beautiful courtyards.

The surrounding area of Verdica is rich in cultural and recreational offerings. Camden Town is famous for its alternative fashion scene and artistic flair, with independent boutiques and creative spaces lining its streets. The Roundhouse, a prominent venue just across from Verdica, is known for showcasing emerging talent and hosts a variety of events throughout the year. This creative hub plays a significant role in the community and offers residents an array of entertainment options right on their doorstep. For those who enjoy outdoor activities, the nearby parks provide ample opportunities for exercise and relaxation. The expansive Regent's Park is just a short distance away, offering beautiful green space, sports facilities, and picturesque walking paths. This access to green spaces is a significant advantage for residents, allowing them to maintain an active lifestyle while enjoying the tranquility of nature.

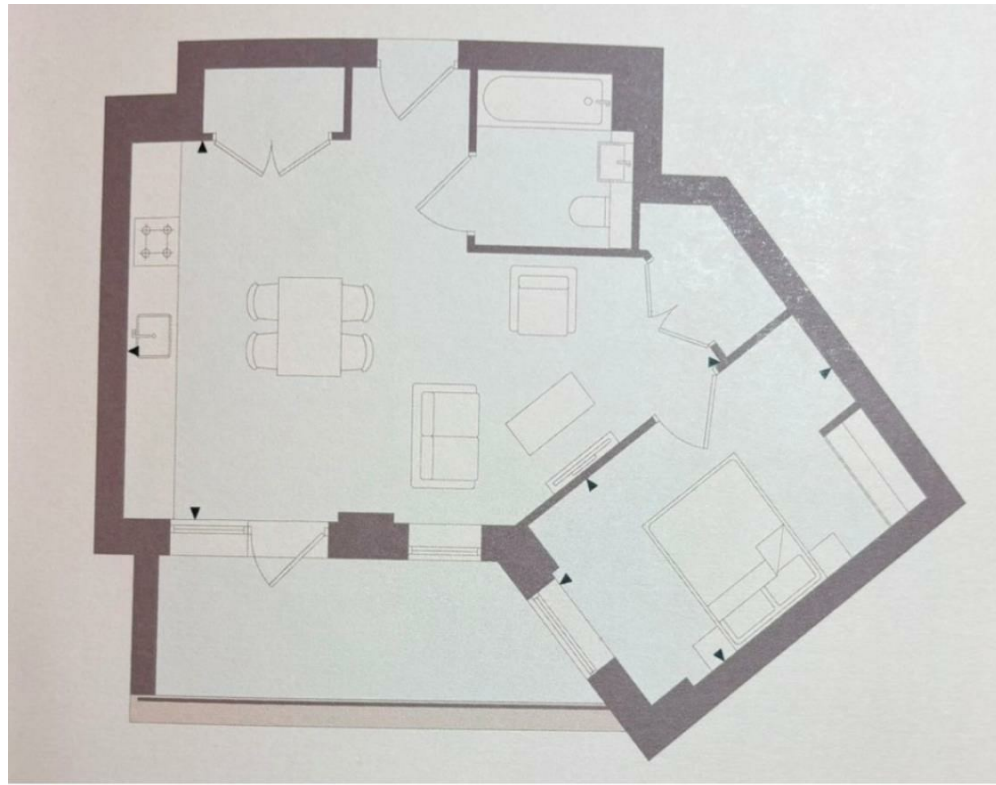
Belmont Street, Camden London

£2,750 Per Month



- 7th Floor
- Close to Local Shops
- Private Balcony
- EPC Rating: B
- Concierge Service
- Close to Transport Links
- Virtual Viewing Available





Total floor area

70 square metres



Let **UK** Home

3F 2 Eastbourne Terrace

Paddington

London

W2 6LG

01795 358 886

info@letukhome.co.uk

Council Tax Band: E

Local Authority:

Agents Note: Whilst every care has been taken to prepare these particulars, they are for guidance purposes only. All measurements are approximate and are for general guidance purposes only and whilst every care has been taken to ensure their accuracy, they should not be relied upon and potential buyers/tenants are advised to recheck the measurements.

Energy Efficiency Rating		Current	Potential
<i>Very energy efficient - lower running costs</i>			
(92 plus) A			
(81-91) B			
(69-80) C			
(55-68) D			
(39-54) E			
(21-38) F			
(1-20) G			
<i>Not energy efficient - higher running costs</i>			
England & Wales	EU Directive 2002/91/EC	85	85

<https://www.letukhome.co.uk/>